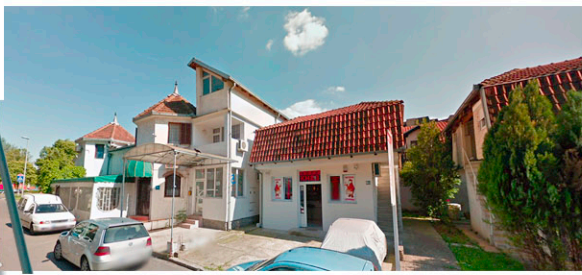
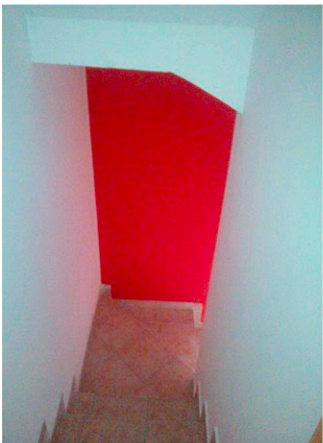
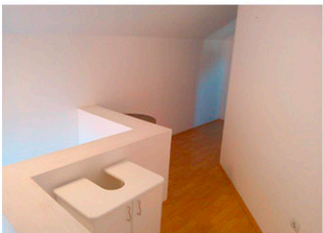


Prime location on the border of New Belgrade-Zemun



Prime location on the border of New Belgrade-Zemun



- 20 meters from famous river Danube's Promenade (5 kilometers long)
- 400 meters from famous hotel Yugoslavia
- Great location center, all bus lines are connected to the city and suburbs
- 3 floors high
- Interesting narrow architecture
- Close to entertainment, restaurant, and sports activities





Commercial Building in Prime Areas of Zemun/Belgrade

**HOTEL
YUGOSLAVIA**

- City: Zemun
- Area: Border of New Belgrade-Zemun
- Typology: Commercial Building
- Country: Serbia
- Property Size: 130 sq. meters
- Rooms: 5
- Floors: 3
- Bathrooms: 1.5

5 MILES BOARDWALK



Office Building
• 400 meters from Hotel Yugoslavia

"BLUE" DANUBE

5 LONG MILE PROMENADE

20 METERS FROM DANUBE'S



